

AG Dispenser

RANGE PRODUCT MANUAL AND SPECIFICATIONS

Conforms to the Essential Health & Safety Requirements of EEC Directive 89/392/EEC, as amended by 91/368/EEC, 93/44/EEC, and 93/68/EEC.

To effect the correct application of the safety requirements stated in the EEC Directives, the following standards and / or technical specification has been used :

- **BS EN 292-1: 1991** Safety of machinery - Basic concepts, general principals for design - Basic terminology, methodology.
- **BS EN 292-2: 1991** Safety of machinery - Basic concepts, general principals for design - Technical principals and specifications.
- **BS EN 294: 1992** Safety of Machinery - Safety distances to prevent danger zones being reached by the upper limbs.
- **BS 5401: 1990** Guide to information content and presentation of operators manuals provided for tractors and machinery for agriculture and forestry.

! DO NOT USE THE AG DISPENSER WHEN FROZEN !

WHEN ORDERING THIS MANUAL PLEASE QUOTE PART NUMBER 2163-0123

Issue No 3 April 2001

SPECIFICATION

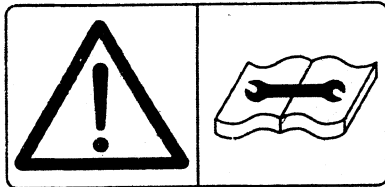
Model	Capacity	Unladen Weight	Width	Depth	Height
AG150	0.90m ³	318kg	1.52m	0.93m	1.00m
AG175	1.50m ³	530kg	1.80m	1.09m	1.02m
AG175S	1.50m ³	540kg	1.80m	1.09m	1.02m
AG200	2.10m ³	560kg	2.04m	1.33m	1.25m
FS200	2.20m ³	572kg	2.03m	1.26m	1.26m
3 POINT TILT	N/A	180kg	N/A	N/A	N/A

SAFETY RULES AND PICTOGRAM / LABEL IDENTIFICATION

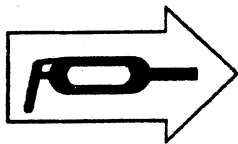
Wherever possible, warning pictograms (labels with no words), or warning labels are used on the machine near the area of danger and / or in the product manual near the relevant instructions.



Pictogram to indicate 'Alert Warning'.



Pictogram to indicate 'Read The Product Manual'.



Pictogram to indicate 'Grease Lubrication Points'.



Pictogram to indicate 'Lifting Hook Location'.



Pictogram to indicate 'Danger – Rotating Auger - Do Not Climb Into Hopper – Keep Hands Away From Auger'



1. Always comply with safety rules as set out in the pictograms, and detailed in this product manual.
2. No bystanders allowed in the working area.
3. Whatever the type of maintenance that needs to be done on the AG Dispenser the Tractor Engine must be stopped, the hand brake applied, and all residual hydraulic pressure released.
4. Only the operator must operate the AG Dispenser, and he must remain in the cab during the complete working cycle.
5. Do not attempt to use the AG Dispenser if any of the safety guards are damaged or missing.

IDENTIFICATION OF THE MACHINE

AG Dispenser's are identified by a maker's plate located on the rear of the machine, see Fig. 1.

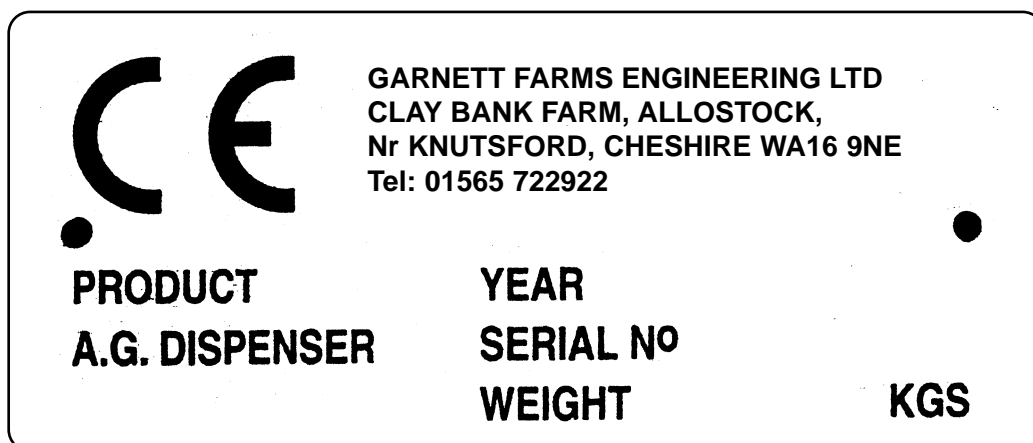


Fig. 1



WARNING. THE OPERATOR IS RESPONSIBLE FOR CHECKING THAT THE PRIME MOVER AND DISPENSER ARE TOGETHER A SAFE AND STABLE UNIT UNDER ALL EXPECTED WORKING CONDITIONS.

1. Before fitting the AG Dispenser to the prime mover vehicle, check that the combined weight of the AG Dispenser and the heaviest load does not exceed the manufacturers recommended safe loading of the front and rear axle, wheels and tyres. Also ensure that the combined load is within the lifting capacity of the prime mover. If the AG Dispenser is mounted on a 3 point rear linkage then also ensure that there is enough counter balance on the front of the prime mover to compensate the load without exceeding the load capacity of the prime mover.
- 2.

IMPORTANT :

If the AG Dispenser mounting brackets are to be welded to the rear frame of the machine, it is absolutely vital that a professional welder carries out all the welding. The material to be welded must be pre-treated and the final welds checked carefully. (See Fig. 1.)

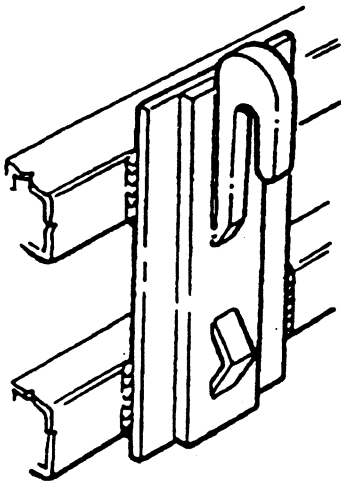


Fig. 1 Welded Mounting Bracket

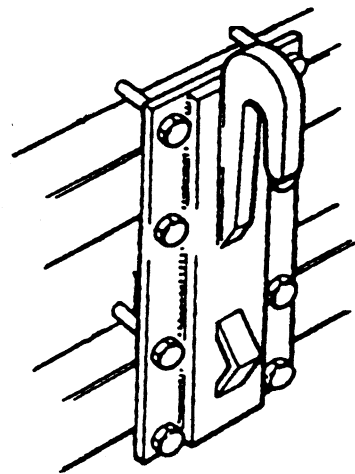


Fig. 1A. Typical Bolted Mounting Bracket

3. The AG Dispenser requires the following oil flows:-

Model:	Oil Flow:
150	15-60 l/min
150s	15-60 l/min
175	30-60 l/min
175s	30-60 l/min
200	30-60 l/min
FS200	30-90 l/min

If machines are required to be used on prime movers with limited oil flow, the AG Dispenser can be modified to suit. Using the 140-60 pulley ratio.

4. The maximum oil flow for all AG Dispensers is 2800 PSI

5. If the AG Dispensers are to be used on Prime Movers, on which the oil pressure is in excess of the above, it must have an oil pressure relief valve fitted.

NOTE; TO KEEP THE HYDRAULIC COMPONENTS WORKING WELL AND TO GIVE A LONG SERVICE IT IS VITAL THAT ONLY CLEAN, WELL MAINTAINED OIL IS USED.

SLIDER COMBINATIONS (important)

There are specific slides required for different bedding materials. See parts pages 15 and 16 (FS 200 page 19).

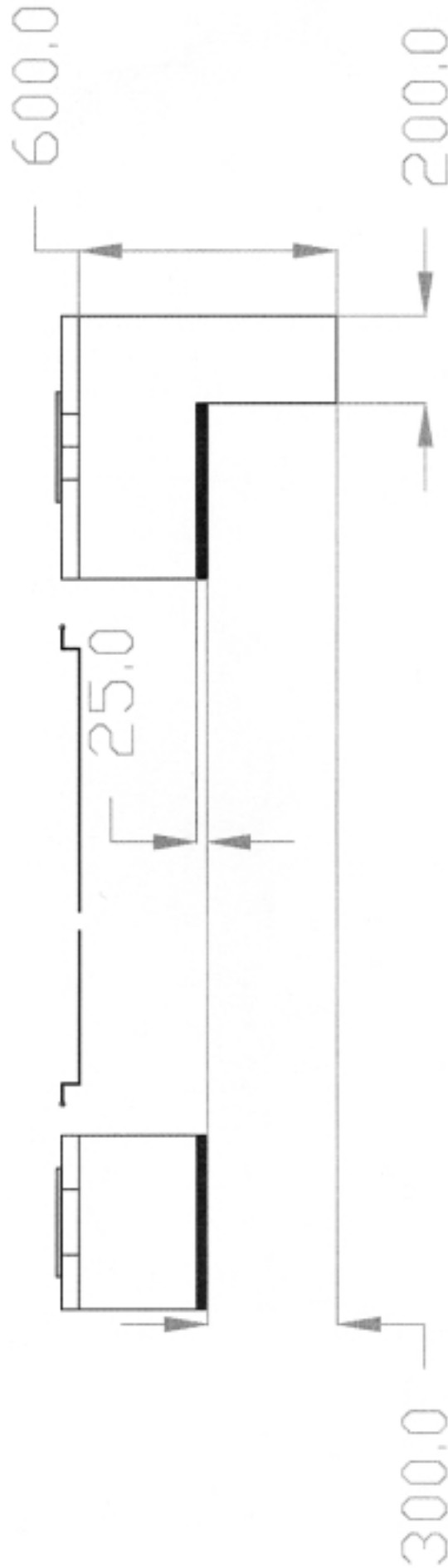
1. If dispensing sand it is essential that only the sand slide be used in the 150s and the 175s. The "s" means sand, and under no other circumstances should sand be spread with any other machine than an "s" type.
2. As a rule of thumb the larger the material the larger the two holes need to be. I.e., the machines are manufactured to dispense the finest of material (DUST) If larger material is to be dispensed the holes need making larger,
3. If the machine runs in one direction then stops and then the other and stops, This is due to the holes being too small.

FIRST ANGLE PROJECTION

DO NOT SCALE

IF IN DOUBT ASK

REMOVE ALL SHARP EDGES



STRAW FS200: IF THE STRAW FLOW NEEDS
 INCREASING
 CUT 25mm EXTRA OUT OFF SLIDE.

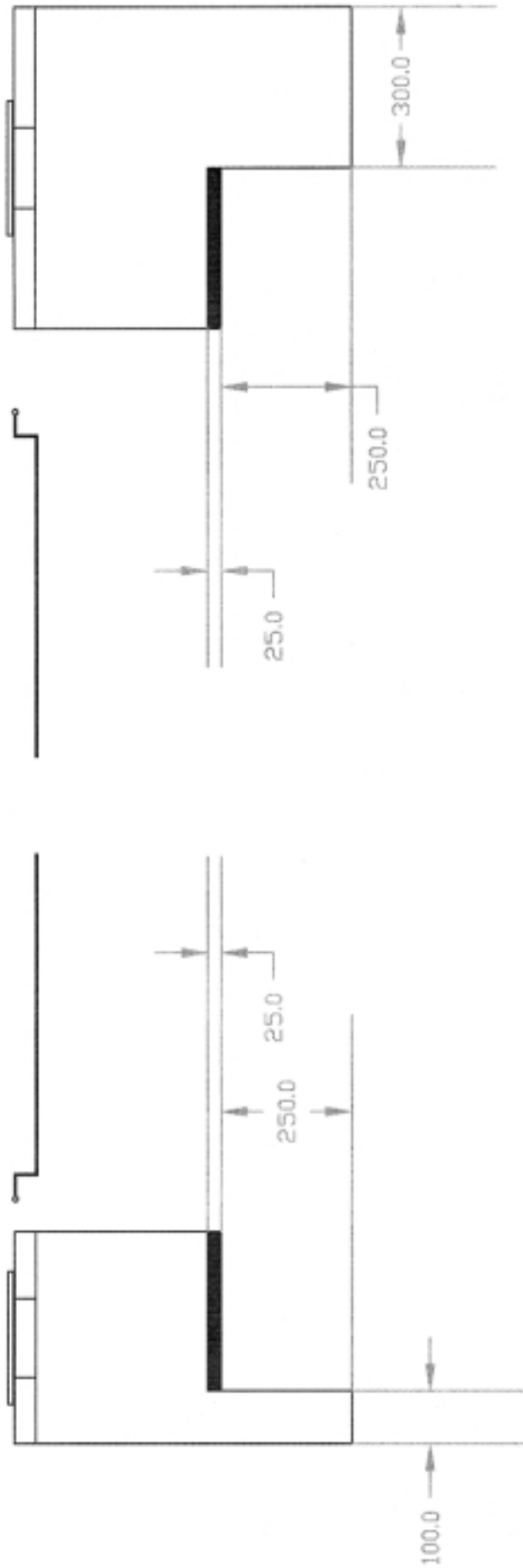
GARNETT FARMS ENG. LTD CLAY BANK FARM ALLSDECK CHESHIRE WATTS ONE ENGLAND	MACHINE	DRAWN	ALL DIMENSIONS ARE IN MILLIMETRES UNLESS OTHERWISE SPECIFIED GEN. TOL. FRACTIONS, 25mm, DECIMALS, 20.0mm UNLESS OTHERWISE SPECIFIED		MATERIAL
	ASSEMBLY DESCRIPTION	DATE	COMPONENT FINISH		PART No
		SCALE			DRAWING No

FIRST ANGLE PROJECTION

DO NOT SCALE

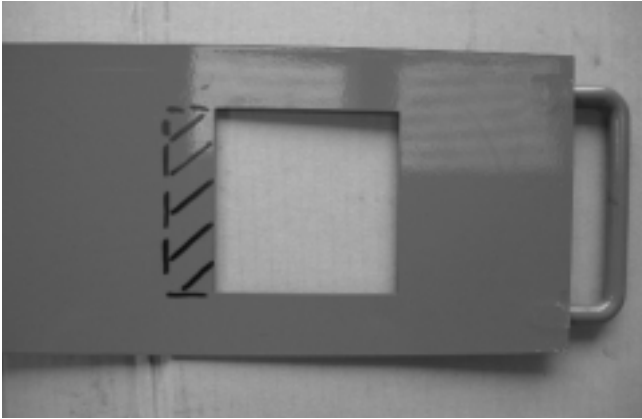
IF IN DOUBT ASK

REMOVE ALL SHARP EDGES



SHAVINGS FS200: IF SHAVINGS ARE'T DISPENSING FAST ENOUGH CUT ANOYHER 25mm OUT.

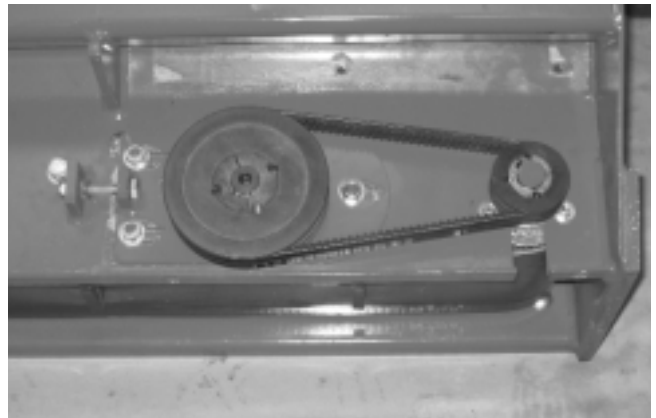
GARNETT FARMS ENG. LTD CLAY BERRY FARM ALLESTREE CHESTER WAUS ME ENGLAND	MACHINE	DRAWN	MATERIAL
	ASSEMBLY		
DESCRIPTION	SCALE	COMPONENT FINISH	PART No
ALL DIMENSIONS ARE IN MILLIMETRES UNLESS OTHERWISE SPECIFIED (EN TO 1. FRACTIONS, 4TH, DECIMALS, 40UM UNLESS OTHERWISE SPECIFIED)			DRAWING No



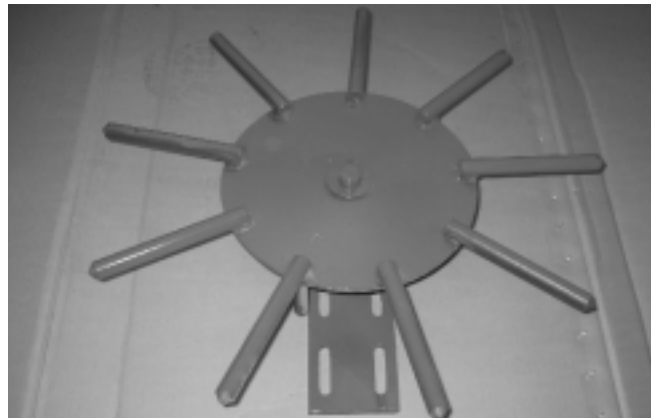
The diagram above shows a 150-sawdust slide and the direction in which to make the holes bigger. Please make each hole the same size, or uneven spread may occur. Only remove small amounts from the slide at anyone time and then run and test.

OPTIONAL EXTRAS

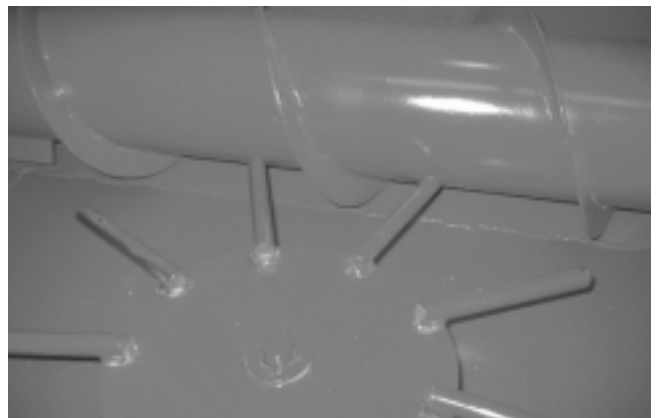
1. The pulley ratio is 140-60 ratio, This can be fitted to all the side Delivery machines, giving extra Distance on throwing material. NOTE the belt tension remains The same .



2. A, the spider assembly unit can be Fitted to all AG Dispensers. The Unit gives extra agitation within the bucket.



B, the unit is to be mounted on the Opposite side to the wering edge in The center of the bucket, with the Points of the unit interconnecting With the flights of the auger.



CONNECTING THE AG DISPENSER TO THE PRIME MOVER



WARNING!

Ensure that the immediate area is clear of spectators.
The operator must stay in the Prime Mover during work.

1. Ensure that the AG Dispenser is placed on the ground in a stable condition.
2. If the AG Dispenser is fitted with a 3 point tilt frame, remove the hitch pins, back up the tractor and attach the lower link arms of the tractor to the lower attachment points on the 3 point tilt frame using the hitch pins supplied, and secure with lynch pins.
3. Attach the tractor top link to the 3 Point tilt frame and secure, using the pin and lynch pin.
4. Adjust the tractor link arm stabilisers so that the AG Dispenser is held central and there is no undue lateral movement.
5. If the AG Dispenser is fitted with a spool valve kit then ensure that the valve block and levers cannot interfere with the tractor in any way.
6. If fitting to a Loader ensure that the correct mounting brackets are fitted and the locking pins are secured.
7. Connect the AG Dispenser to the prime mover service ports using standard probes. The red probes should be connected to the pressure port, if stated, and the blue to the return port.
8. Hose lengths will need to be made up depending on the vehicle used.



WHEN SOURCING HYDRAULIC HOSES AND CONNECTING COMPONENTS, ENSURE THAT THE HOSES ARE DOUBLE BRAIDED AND THAT ALL PARTS ARE DESIGNED TO COPE WITH THE TRACTOR HYDRAULIC SYSTEM PRESSURE.

9. Ensure that the AG Dispenser operates in both directions (except FS200 which only runs in 1 direction), before filling with material, and that the operator is satisfied that the lever control action is compatible with the direction of movement of the dispenser belt.

OPERATION AND SAFE USE OF THE AG DISPENSER



WARNING.!

Ensure that the immediate area is clear of spectators.
The operator must stay in the Prime mover during work.

1. Load the AG Dispenser by lowering gently to the load position and driving slowly into the material to be used. Do not use excessive force. When full, raise to the discharge position.
2. If the AG Dispenser is fitted with a 3- point tilt frame then lower the Dispenser gently to the load position and drive slowly into the material to be used. Do not use excessive force. When full, raise on the tilt frame until fully upright.
3. The AG Dispenser will discharge on either side of the machine. The rate of discharge is determined by the engine speed of the prime mover. The higher the engine speed the further the material will be thrown. The distance the material is thrown will also be determined by the height of the Dispenser from the ground.
4. If for any reason the Dispenser should stop discharging other than it being empty, then stop the dispenser immediately. Ensure that the engine of the prime mover is turned off and the handbrake applied, before attempting to clear any blockage or carry out maintenance work.



BLOCKAGE FROM A JAMMED MACHINE IS A MAJOR HAZARD AND GREAT CARE MUST BE TAKEN TO TURN OFF THE PRIME MOVER'S ENGINE, RELEASE ANY RESIDUAL HYDRAULIC PRESSURE AND LOWER THE MACHINE TO THE GROUND BEFORE ATTEMPTING TO REMOVE THE BLOCKAGE.

5. Ensure that the material being distributed is clean and free of any objects that could cause irreparable damage to the Dispenser.
6. Do not attempt to use the AG Dispenser for distributing any material other than those specified.

ADJUSTMENTS AND MAINTENANCE OF THE AG DISPENSER



WARNING!

Before any maintenance is carried out on the AG Dispenser, ensure that the prime mover's engine is turned off, the handbrake is applied, any residual hydraulic pressure is released and the Dispenser is stable.

DAILY:

1. Check that all frame nuts and bolts are tight.
2. Check hydraulic hoses for damage.

WEEKLY:

1. Lubricate all points indicated by the pictograms on the machine.
2. Check the main conveyer belt for damage and ensure that the tension is correct. This should be such that the belt does not slip under normal load conditions.
3. The life of the hydraulic components depends upon the quality of the hydraulic oil. It is important to check that the Prime Mover's oil filters are serviced regularly.

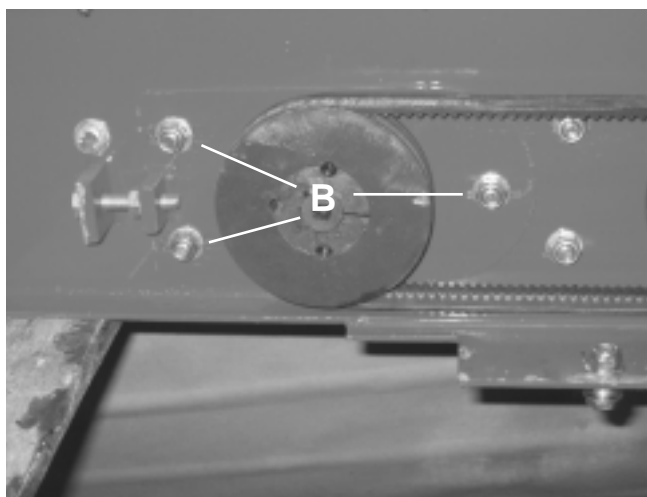
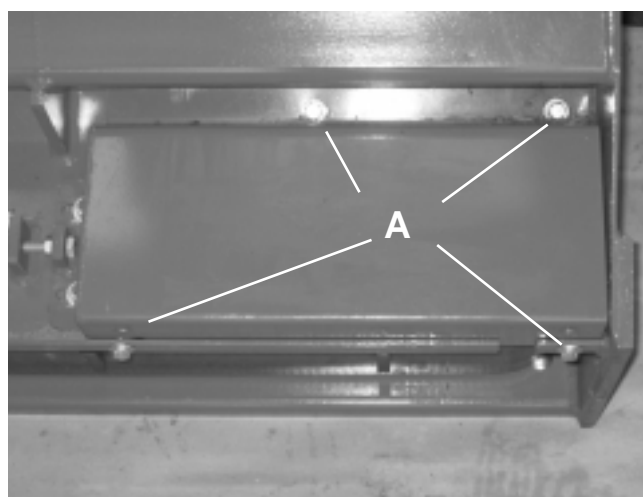
Monthly

1. Check Vee-belt tension, please ensure the prim mover is switched off and the hand break applied. The correct procedure as shown below.



A, the AG dispensers with removable Conveyors need the two bolts on the right Side removing. The two on the left are to Be slackened.

B, the AG dispensers 150/150s require the Four M8 bolts removing (item A).

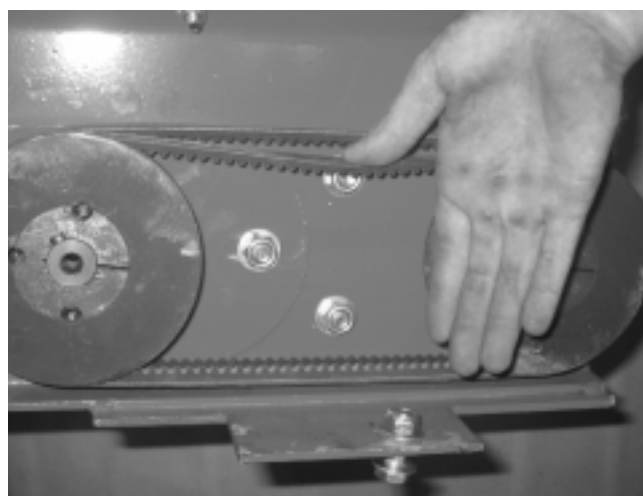


C, to tighten the belts, loosen nuts M10 (item B)

D, then tighten using adjuster screw (item C)

E, the belt tension on both the XPZ900 and the XPZ875 Should be the same, i.e., **15mm** as shown in picture.

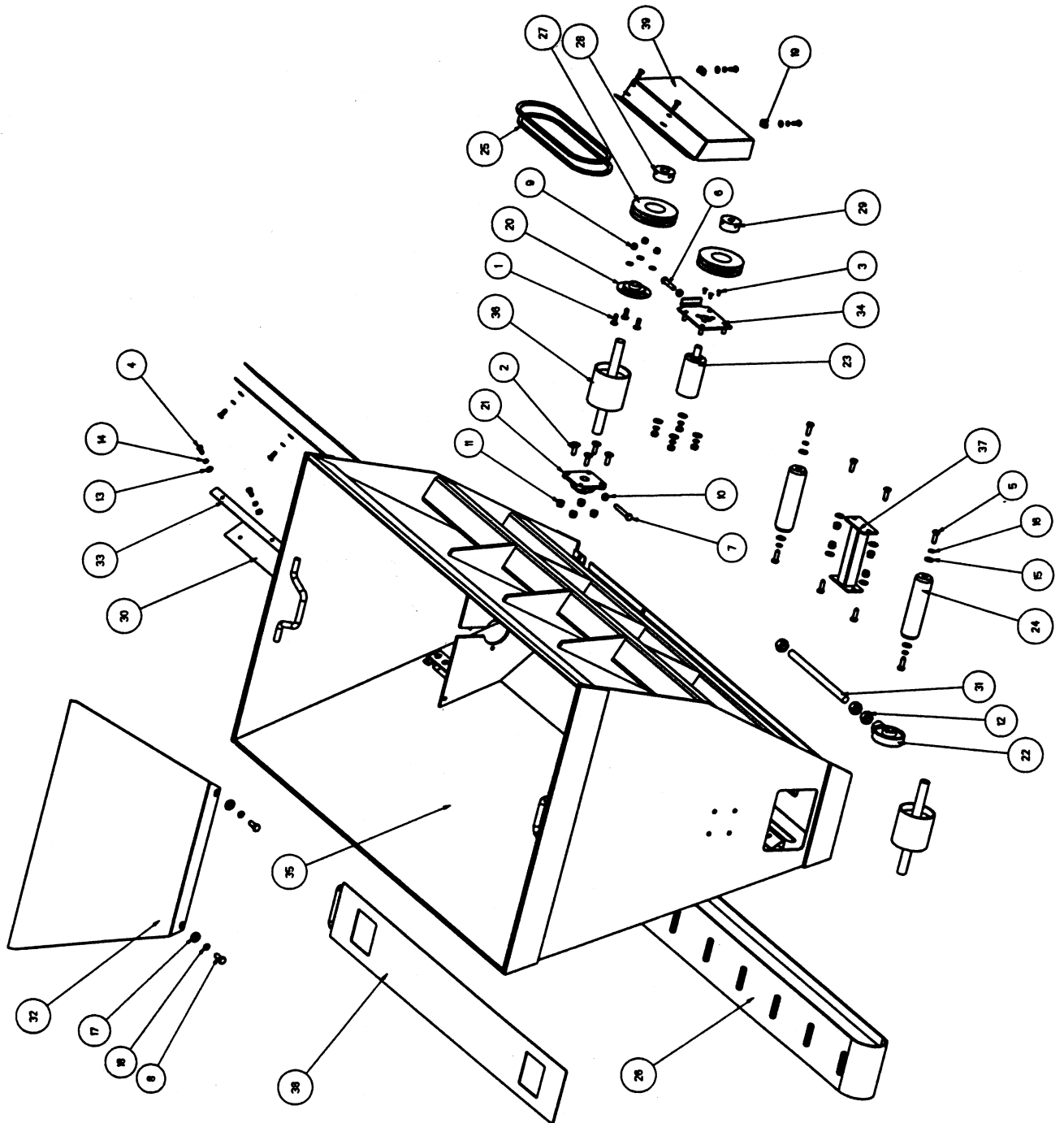
F, replace all guards and fasten correctly. Run and test.



AG Dispenser

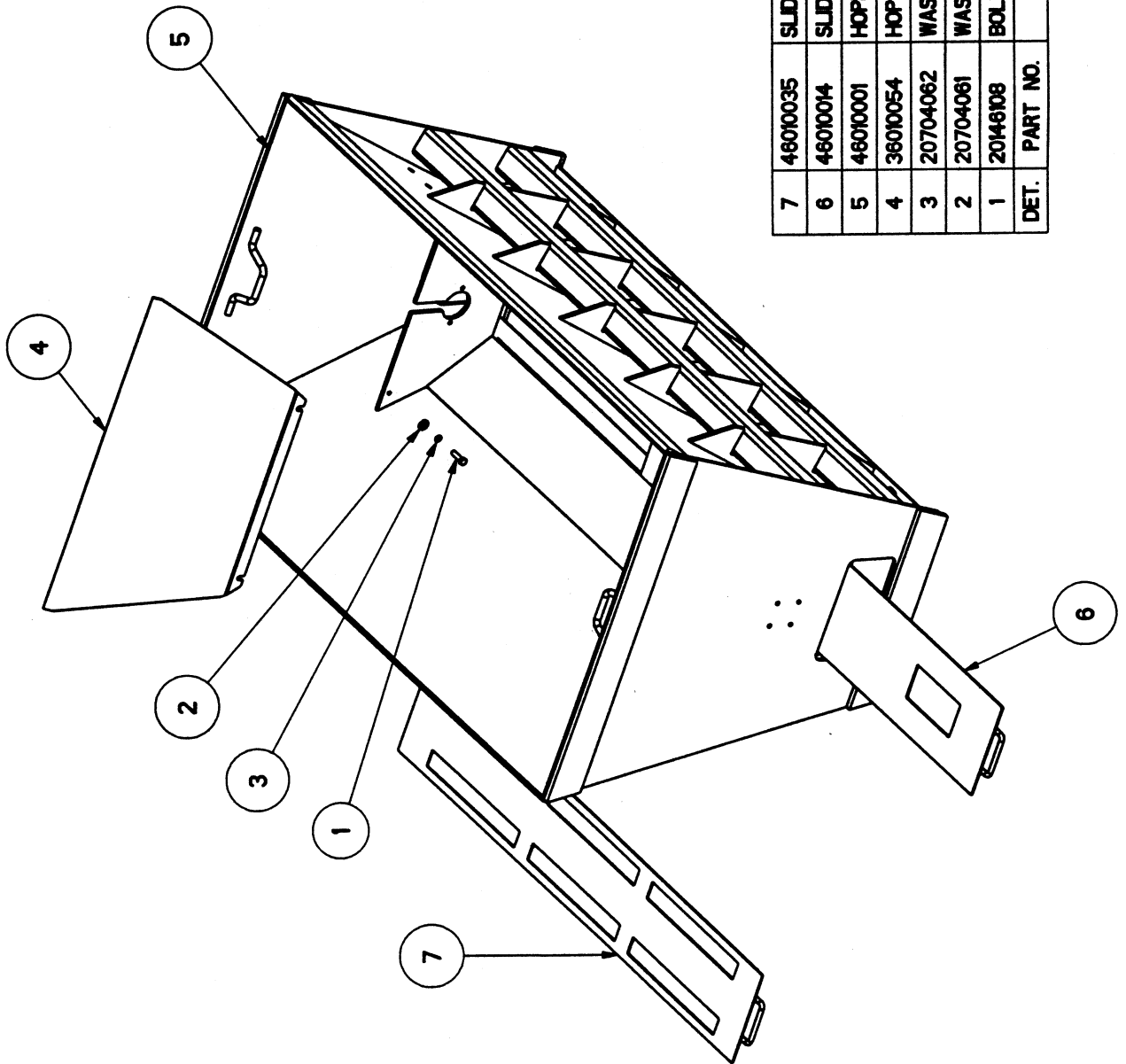
PARTS ILLUSTRATIONS

A.G. DISPENSER 150 BUCKET ASSY.



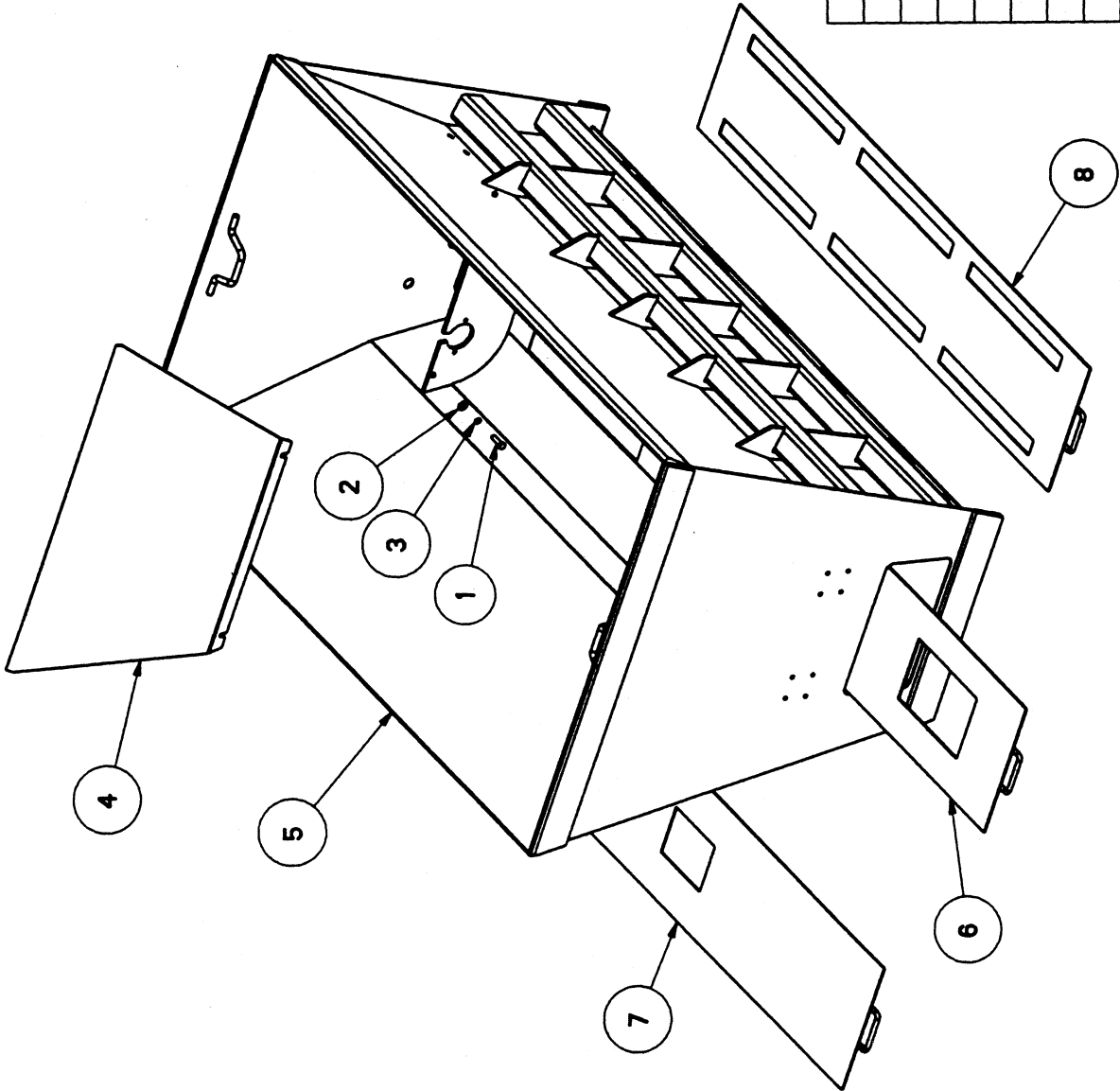
QTY.	PART NO.	DESCRIPTION
1	2026305	BOLT M8x25 CARRIAGE PLTD
3	2026306	BOLT M8x30 CARRIAGE PLTD
4	2026602	M8 x 12 C/SK SKT SCREW PLTD
16	2022804	SCREW M8x20 HEX. SET. PLTD
8	2023806	SCREW M10x30 HEX. SET. PLTD
1	2023810	SCREW M10x50 HEX. SET. PLTD
1	2024608	SCREW M12x30 HEX. SET. PLTD
3	20328700	NUT M8 HEX NYLOC PLTD
6	20338100	NUT M10 HEX PLAIN PLTD
6	20338700	NUT M10 HEX NYLOC PLTD
6	20368100	NUT M20 HEX PLAIN PLTD
19	20702081	WASHER M8 PLAIN PLTD
18	20702082	WASHER M8 SPRING PLTD
12	20703061	WASHER M10 PLAIN FORM C PLTD
8	20703062	WASHER M10 SPRING PLTD
2	20704081	WASHER M12 PLAIN FORM C PLTD
2	20704082	WASHER M12 SPRING PLTD
2	20800655	M8 LUGNUT
1	21204017	PRESSED STEEL FLANGE BEARING
1	21204029	BEARING FLANGED SF25
2	21207000	CAST HANGER BEARING
1	2130024	HYDRAULIC MOTOR AMM20
2	21503028	IDLER ROLLER 150
2	21508240	BELT 'V' SUPER TX XPZ 900
1	21508712	CONVEYOR BELT AG DISP. 150
2	21707010	TAPER LOCK BUSH 160.25
1	21707018	TAPER LOCK BUSH 160.16
2	21727378	RUBBER STRIP HOLED
2	3600055	THREADED BAR M20
1	3600078	SHEET 3THK FORMED
2	3600091	FLAT BLACK 25 x 3 HOLED
1	4600001	MOTOR MOUNTING PLATE W/A
1	4600041	AG 150 HOPPER W/A
2	4600044	ROLLER W/A 150
1	4600046	SPACER W/A 150
1	4600052	SLIDE W/A 150
1	4600052	GAURD W/A

A.G. DISPENSER 175 / 175S BUCKET ASSEMBLY



DET.	PART NO.	DESCRIPTION	QTY.
7	46010035	SLIDER AG 175 SAND/PAPER-PULP	1
6	46010014	SLIDER AG 175 STRAW/SAWDUST	1
5	46010001	HOPPER W/A 175	1
4	36010054	HOPPER MOTOR COVER 175	1
3	20704062	WASHER M12 SPRING PLTD	2
2	20704061	WASHER M12 PLAIN FORM C PLTD	2
1	20146108	BOLT M12x40 HEX (8.8) PLTD	2

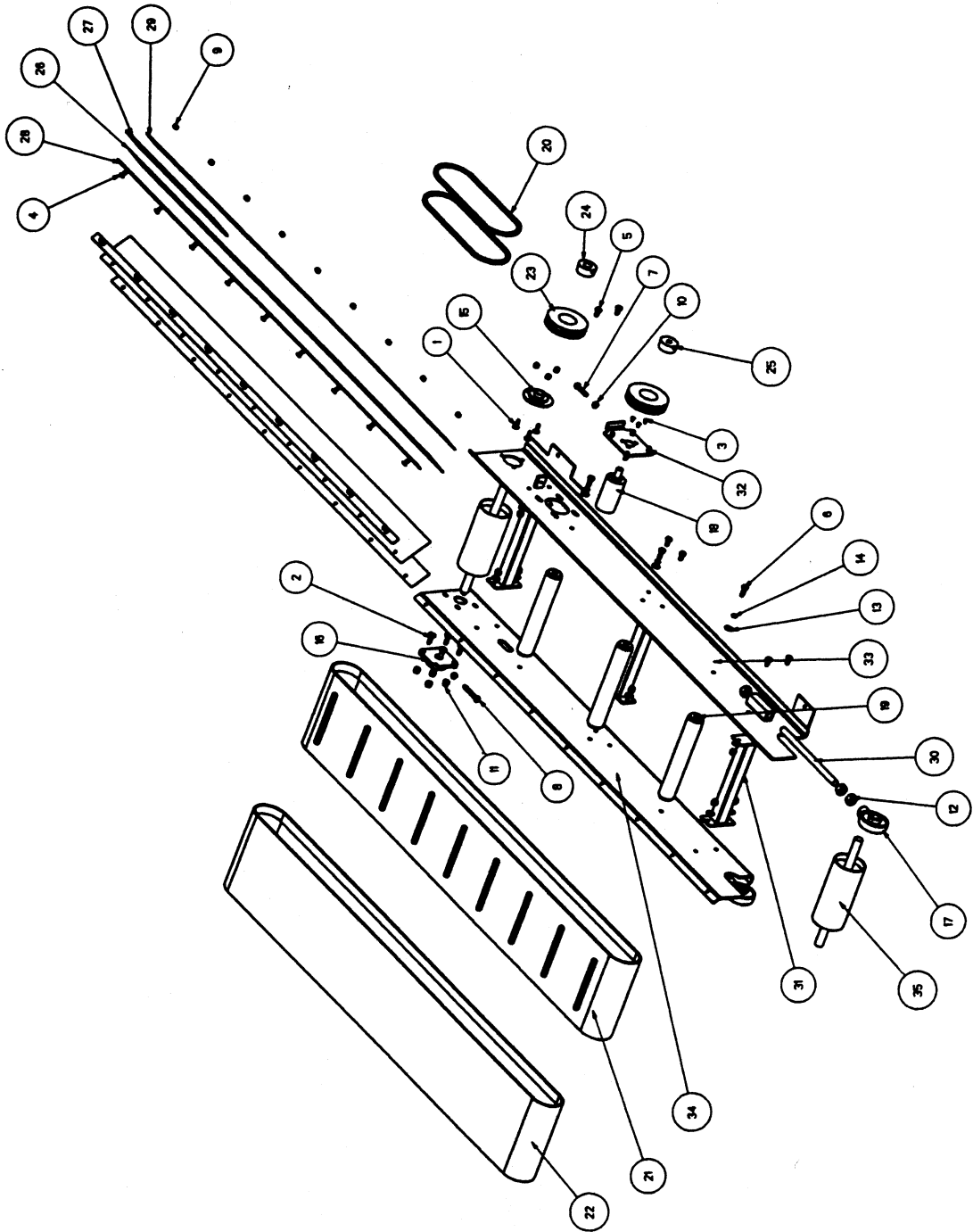
A.G. DISPENSER 200 BUCKET ASSEMBLY



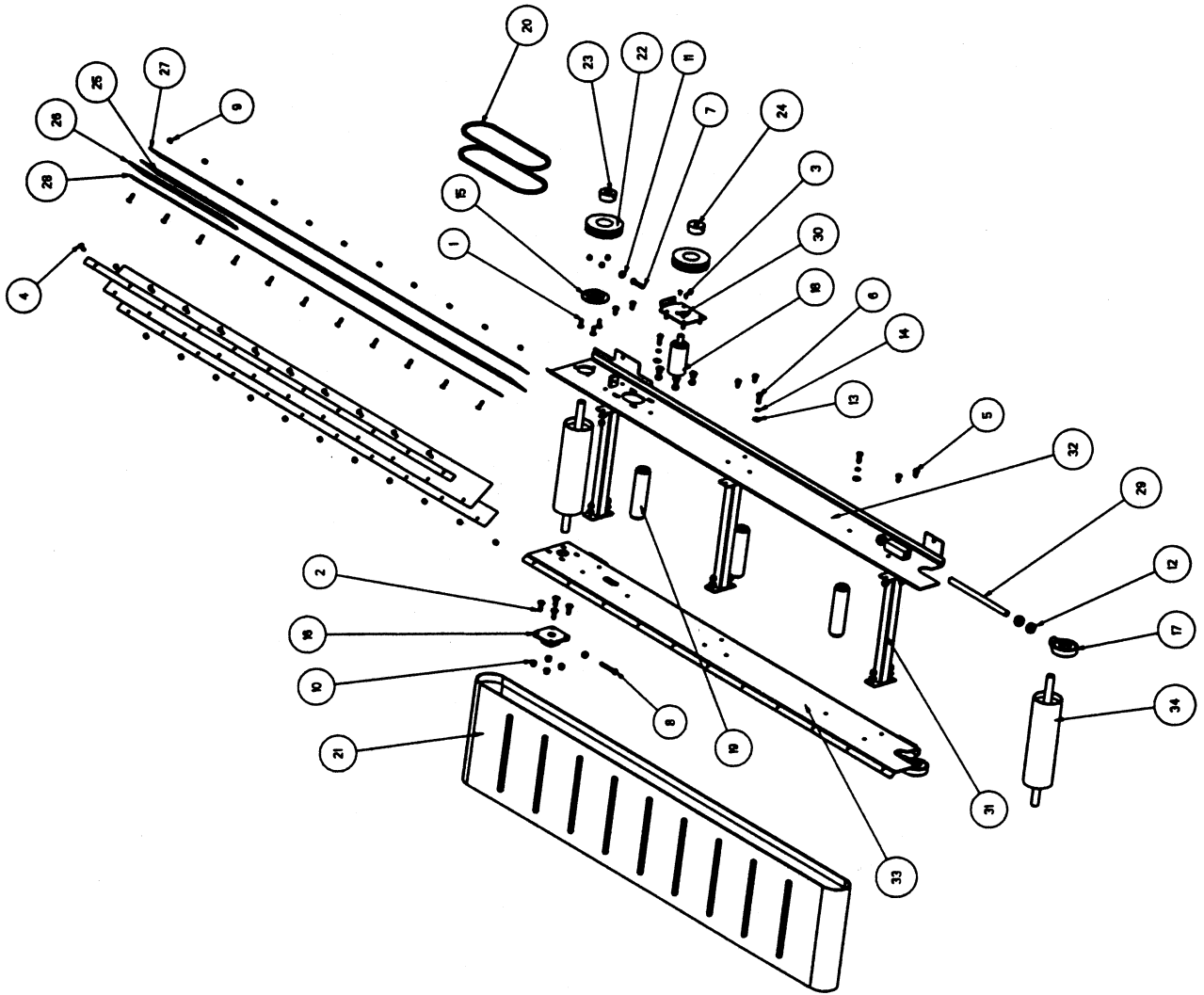
DET.	PART NO.	DESCRIPTION	QTY.
8	46010036	SLIDER AG 200 PAPER PULP	1
7	46010034	SLIDER AG 200 SAWDUST	1
6	46010019	SLIDER AG 200 STRAW/SAWDUST	1
5	46010006	HOPPER W/A 200	1
4	36010053	AG 200 HOPPER MOTOR COVER	1
3	20704062	WASHER M12 SPRING PLTD	2
2	20704061	WASHER M12 PLAIN FORM C PLTD	2
1	20146108	BOLT M12x40 HEX (8.8) PLTD	2

CONVEYOR ASSEMBLY AG 175 AND 175S

QTY.	PART NO.	DESCRIPTION
2	4600020	ROLLER W/A 175 CONVEYOR
1	4600003	CONVEYOR SIDE W/A
1	4600002	CONVEYOR SIDE W/A
1	4600001	MOTOR MOUNTING PLATE W/A
3	4600000	CONVEYOR SPACER W/A
2	3600055	THREADED BAR M20
2	3600042	PROFILE 2 THK HOLED
2	3600041	FLAT BLACK 25 x 3 HOLED
1	21727378	RUBBER STRIP 5THK HOLED
2	21727377	RUBBER STRIP HOLED
1	21707011	TAPER LOCK BUSH 160.16
1	21707000	TAPER LOCK BUSH 160.25
2	21507734	PULLEY 125 x 2 SPZ
1	21506714	CONVEYOR BELT AG DISP. 175S
1	21506713	CONVEYOR BELT AG DISP. 175
2	21506240	BELT V SUPPER TX XPZ 900
3	21503025	IDLER ROLLER 175
1	21300024	HYDRAULIC MOTOR AMM20
2	21207000	CAST HANGER BEARING
1	21204028	BEARING FLANGED SF25
1	21204017	PRESSED STEEL FLANGE BEARING
10	20703062	WASHER M10 SPRING PLTD
22	20703061	WASHER M10 PLAIN FORM C PLTD
6	20366100	NUT M20 HEX PLAIN PLTD
6	20336700	NUT M10 HEX NYLOC PLTD
16	20336600	NUT M10 HEX PLAIN PLTD
21	20326700	NUT M8 HEX NYLOC PLTD
1	20236814	SCREW M10x70 HEX. SET. PLTD
1	20236810	SCREW M10x50 HEX. SET. PLTD
6	20236106	SCREW M10x30 HEX. SET. PLTD
12	20236104	SCREW M10x20 HEX. SET. PLTD
18	20226105	SCREW M8x25 HEX. SET. PLTD
3	20216602	M6 x 12 C/SK SKT SCREW PLTD
4	20136306	BOLT M10x30 CARRIAGE PLTD
3	20126305	BOLT M8x25 CARRIAGE PLTD
	DET. PART NO.	DESCRIPTION

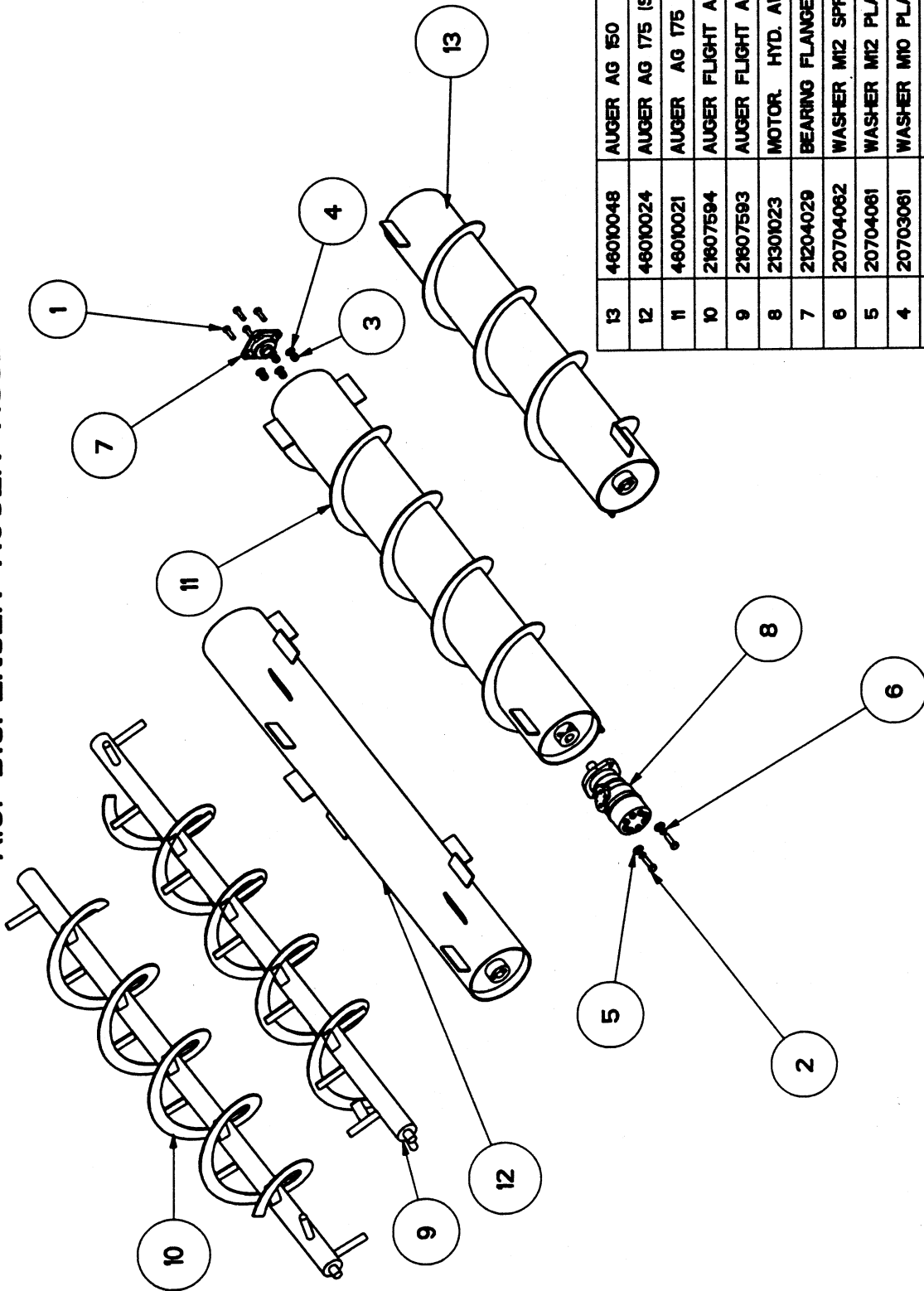


CONVEYOR ASSEMBLY AG 200



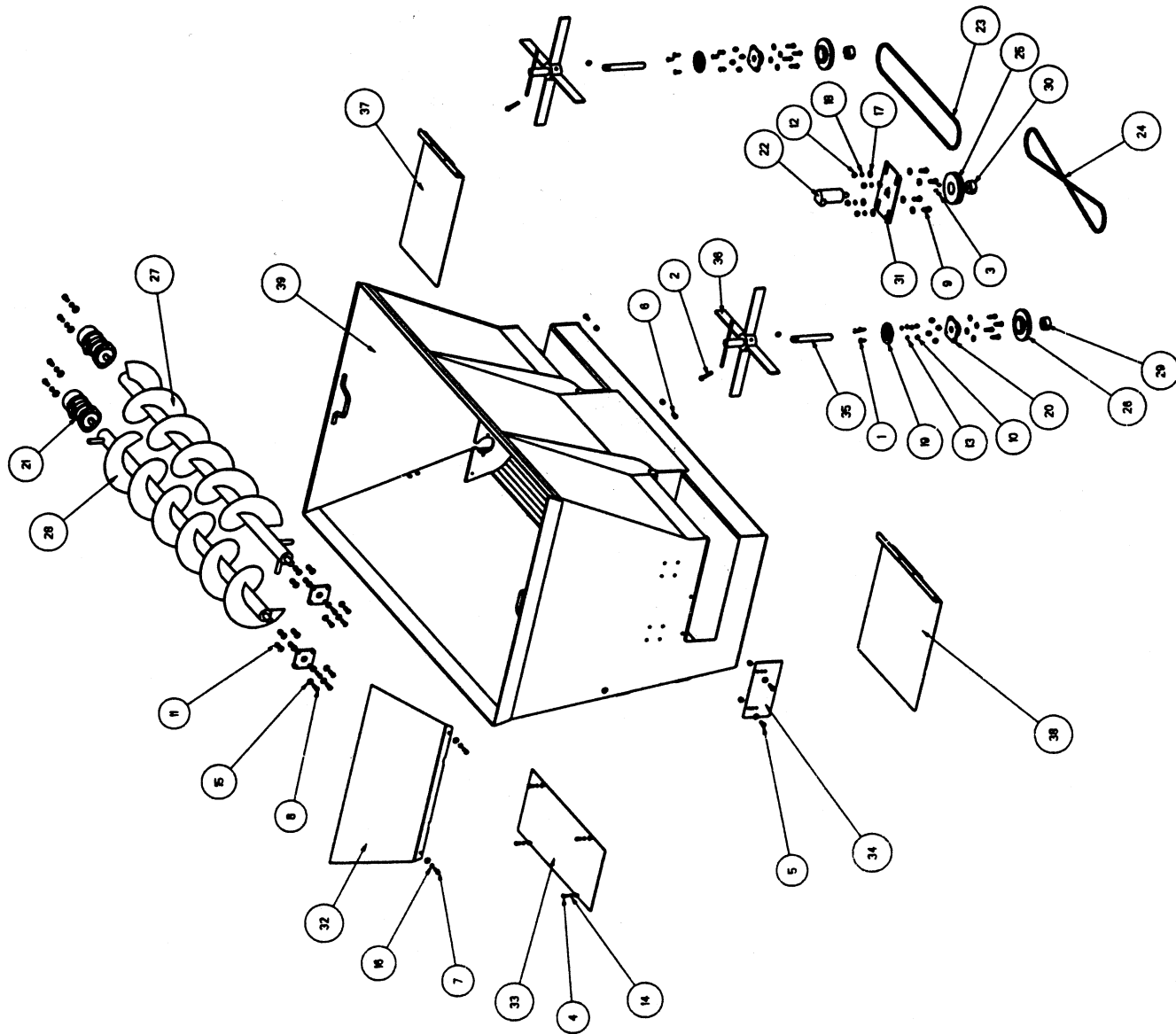
DET.	PART NO.	DESCRIPTION	QTY.
34	4600008	ROLLER W/A 200 CONVEYOR	2
33	4600007	CONVEYOR SIDE W/A	1
32	4600006	CONVEYOR SIDE W/A	1
31	4600005	SPACER W/A 200 CONVEYOR	3
30	4600001	MOTOR MOUNTING PLATE W/A	1
29	36000055	THREADED BAR M20	2
28	36000040	FLAT BLACK 25 x 3 HOLED	2
27	36000039	FLAT 2 THK HOLED	2
26	21727378	RUBBER STRIP 5THK HOLED	1
25	21727376	RUBBER STRIP HOLED	2
24	21707011	TAPER LOCK BUSH 1610.16	1
23	21707000	TAPER LOCK BUSH 1610.25	1
22	2507734	PULLEY 125 x 2 SPZ	2
21	2500875	CONVEYOR BELT AG DISP. 200	1
20	25008240	BELT V SUPER TX XPZ 900	2
19	2503026	IDLER ROLLER 150	3
18	21301024	HYDRAULIC MOTOR AMM20	1
17	21207000	CAST HANGER BEARING	2
16	21204029	BEARING FLANGED SF25	1
15	21204017	PRESSED STEEL FLANGE BEARING	1
14	20703082	WASHER M10 SPRING PLTD	10
13	20703061	WASHER M10 PLAIN FORM C PLTD	22
12	20366100	NUT M20 HEX PLAIN PLTD	6
11	20346100	NUT M12 HEX PLAIN PLTD	6
10	20336700	NUT M10 HEX NYLOC PLTD	16
9	20326700	NUT M8 HEX NYLOC PLTD	25
8	20236114	SCREW M10x70 HEX. SET. PLTD	1
7	20236110	SCREW M10x50 HEX. SET. PLTD	1
6	20236106	SCREW M10x30 HEX. SET. PLTD	6
5	20236104	SCREW M10x20 HEX. SET. PLTD	12
4	20226105	SCREW M8x25 HEX. SET. PLTD	22
3	20216602	IM6 x 12 C/SK SKT SCREW PLTD	3
2	20136306	BOLT M10x30 CARRIAGE PLTD	4
1	20126305	BOLT M8x25 CARRIAGE PLTD	3

A.G. DISPENSER AUGER ASSEMBLIES



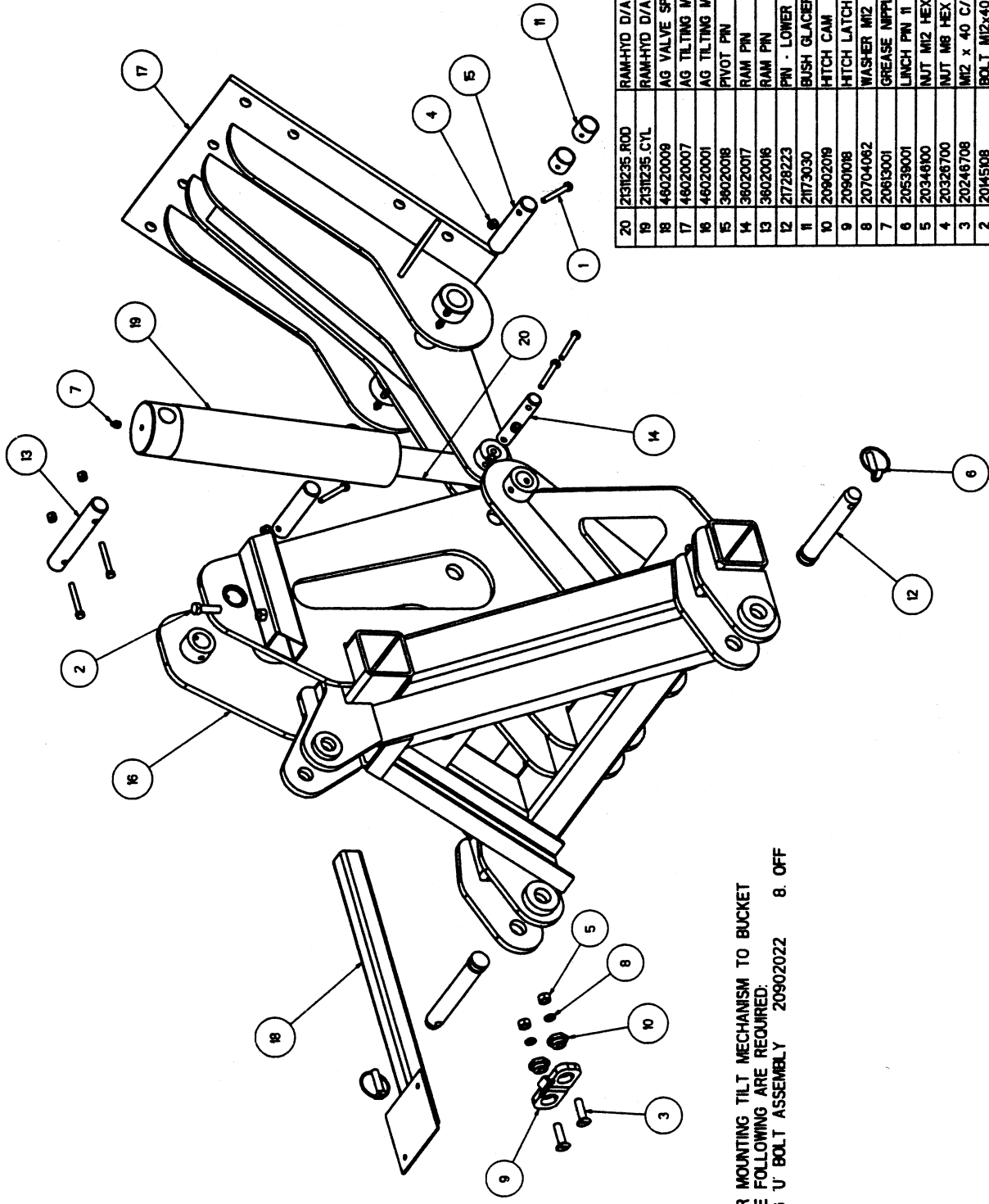
DET.	PART NO.	DESCRIPTION	QTY.
13	46010048	AUGER AG 150	1
12	46010024	AUGER AG 175 (SAND)	1
11	46010021	AUGER AG 175	1
10	21607594	AUGER FLIGHT ASSY. RH AG200	1
9	21607593	AUGER FLIGHT ASSY LH AG200	1
8	21301023	MOTOR. HYD. AMMR 400M	1
7	21204029	BEARING FLANGED SF25	1
6	20704062	WASHER M12 SPRING PLTD	2
5	20704061	WASHER M12 PLAIN FORM C PLTD	2
4	20703061	WASHER M10 PLAIN FORM C PLTD	4
3	20336700	NUT M10 HEX NYLOC PLTD	4
2	20145108	BOLT M12x40 HEX (8.8) PLAIN	2
1	20136107	BOLT M10x35 HEX (8.8) PLTD	4

AG DISPENSER FS200 BUCKET ASSY.



39	46010070	HOPPER W/A AG FS200	1
38	46010065	SLIDE W/A (WIDE) FS200	1
37	46010064	SLIDE W/A (NARROW) FS200	1
36	46010063	SPINNER W/A	2
35	36010133	PIN 25DIA HOLED	2
34	36010117	SHEET 5THK HOLED	2
33	36010111	SHEET 3THK HOLED	1
32	36010110	SHEET 3THK FORMED	1
31	36010108	MOTOR MOUNTING PLATE	1
30	21707011	TAPER LOCK BUSH 1610.16	1
29	21707010	TAPER LOCK BUSH 1610.25	2
28	21607600	AG FS200 AUGER RH	1
27	21607599	AG FS200 AUGER LH	1
26	21507742	PULLEY 140 x 1 SPZ	2
25	21507737	PULLEY 140 x 2 SPZ	1
24	21506246	BELT V' SUPER HC SPZ 1862	1
23	21506245	BELT V' SUPER HC SPZ 1837	1
22	21501038	HYDRAULIC MOTOR AMM32 P-R	1
21	21501023	MOTOR. HYD. AWMR 400M	2
20	21204029	BEARING FLANGED SF25	4
19	21204017	PRESSED STEEL FLANGE BEARING	2
18	20704062	WASHER M12 SPRING PLTD	8
17	20704061	WASHER M12 PLAIN FORM C PLTD	12
16	20703062	WASHER M10 SPRING PLTD	2
15	20703061	WASHER M10 PLAIN FORM C PLTD	30
14	20702062	WASHER M8 SPRING PLTD	4
13	20702061	WASHER M8 PLAIN PLTD	10
12	20346100	NUT M12 HEX PLAIN PLTD	4
11	20336700	NUT M10 HEX NYLOC PLTD	24
10	20328700	NUT M8 HEX NYLOC PLTD	6
9	20246106	SCREW M12x30 HEX SET. PLTD	8
8	20236107	SCREW M10x35 HEX SET. PLTD	16
7	20236106	SCREW M10x30 HEX SET. PLTD	2
6	20236105	SCREW M10x25 HEX SET. PLTD	2
5	20235106	SCREW M10x30 HEX SET. PLAIN	4
4	20226104	SCREW M8x20 HEX SET. PLTD	4
3	20216602	M6 x 12 C/SK SKT SCREW PLTD	3
2	20196120	BOLT M10x100 HEX (8.8) PLTD	2
1	20126305	BOLT M8x25 CARRIAGE PLTD	6
DET.	PART NO.	DESCRIPTION	QTY.

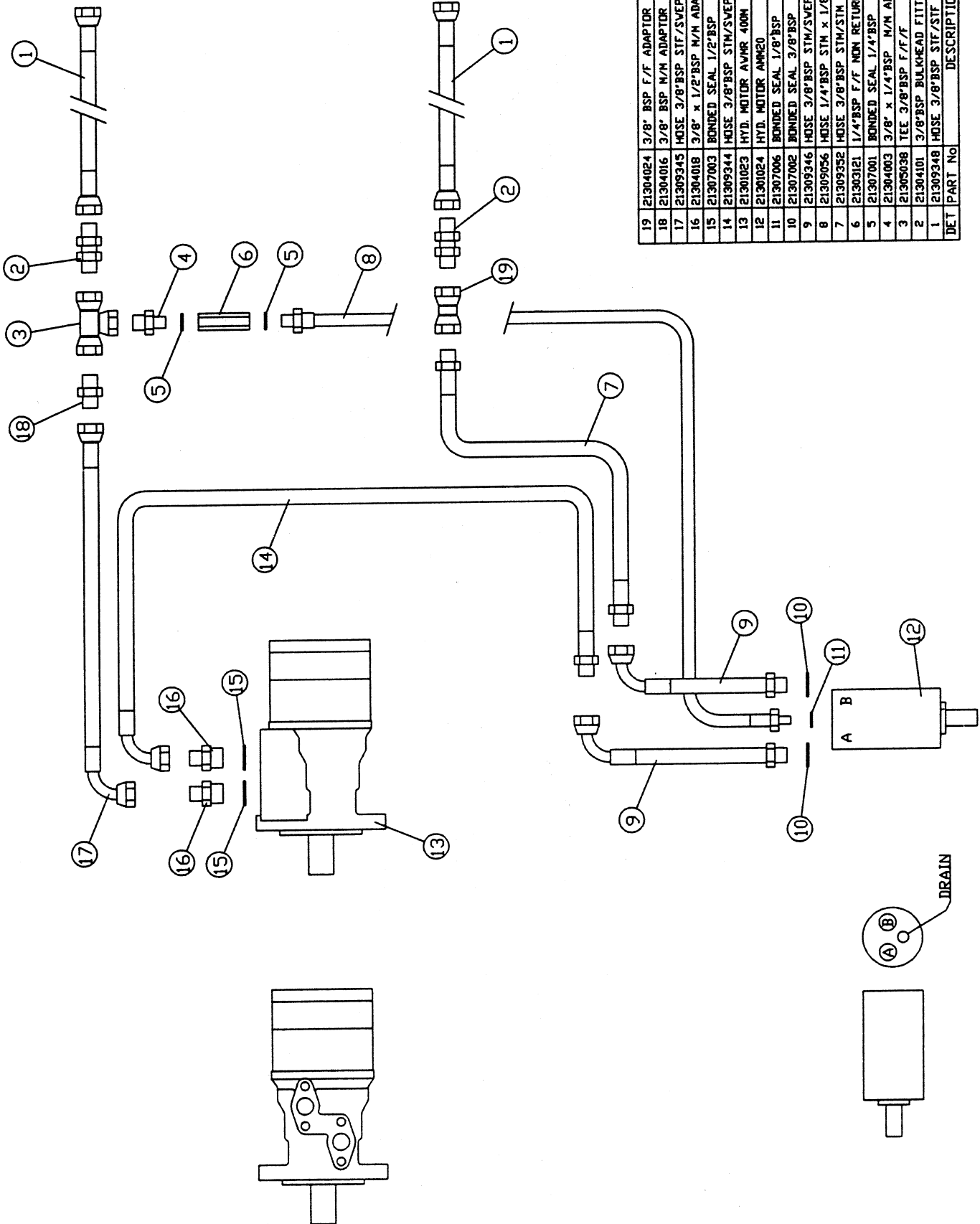
A.G. DISPENSER TILTING MECHANISM ASSEMBLY



FOR MOUNTING TILT MECHANISM TO BUCKET
THE FOLLOWING ARE REQUIRED:
M16 U BOLT ASSEMBLY 20902022 8. OFF

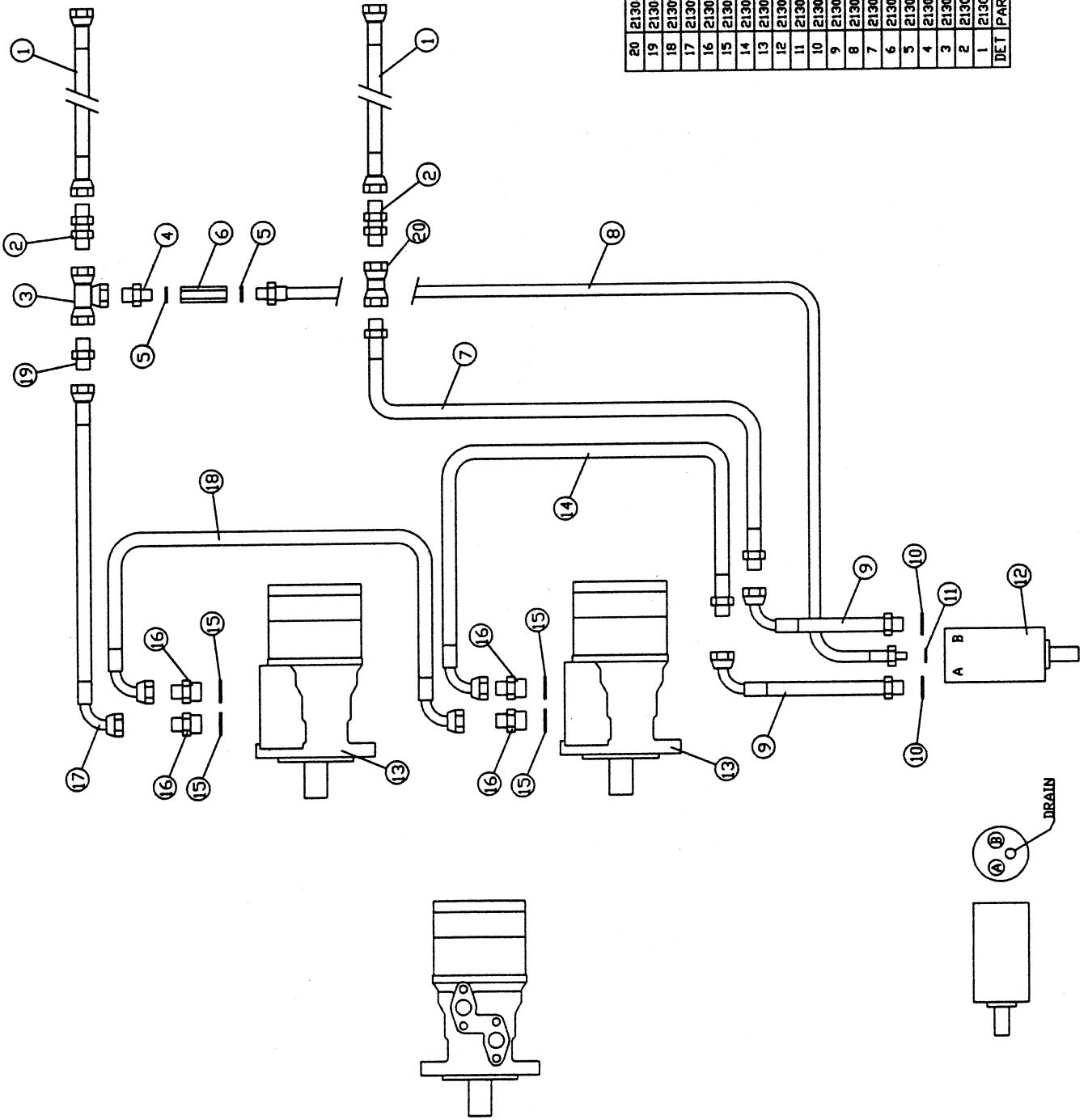
DET.	PART NO.	DESCRIPTION	QTY.
20	2131235.ROD	RAM-HYD D/A 80/50 STROKE 300 ROD	1
19	2131235.CYL	RAM-HYD D/A 80/50 STROKE 300 CYL	1
18	46020008	AG VALVE SPOOL MOUNTING ARM	1
17	46020007	AG TILTING MECHANISM PIVOT FRAME W/A	1
16	46020001	AG TILTING MECHANISM MAIN FRAME W/A	1
15	36020018	PIVOT PIN	2
14	36020017	RAM PIN	1
13	36020016	RAM PIN	1
12	21728223	PIN - LOWER LINK CAT II	2
11	21173030	BUSH GLACIER PM 3030 DX	4
10	20902019	HITCH CAM	2
9	20901018	HITCH LATCH PLATE	1
8	20704062	WASHER M12 SPRING PLTD	2
7	20613001	GREASE NIPPLE M10 STRAIGHT	4
6	20539001	LINCH PIN II DIA.	2
5	203449100	NUT M12 HEX PLAIN PLTD	2
4	20326700	NUT M8 HEX NYLOC PLTD	6
3	20246708	M12 x 40 C/SK SLTD SET PLTD	2
2	20M5108	BOLT M12x40 HEX (8.8) PLAIN	1
1	20126112	BOLT M8x60 HEX (8.8) PLTD	6

HYDRAULIC ASSY 175 AND 175S



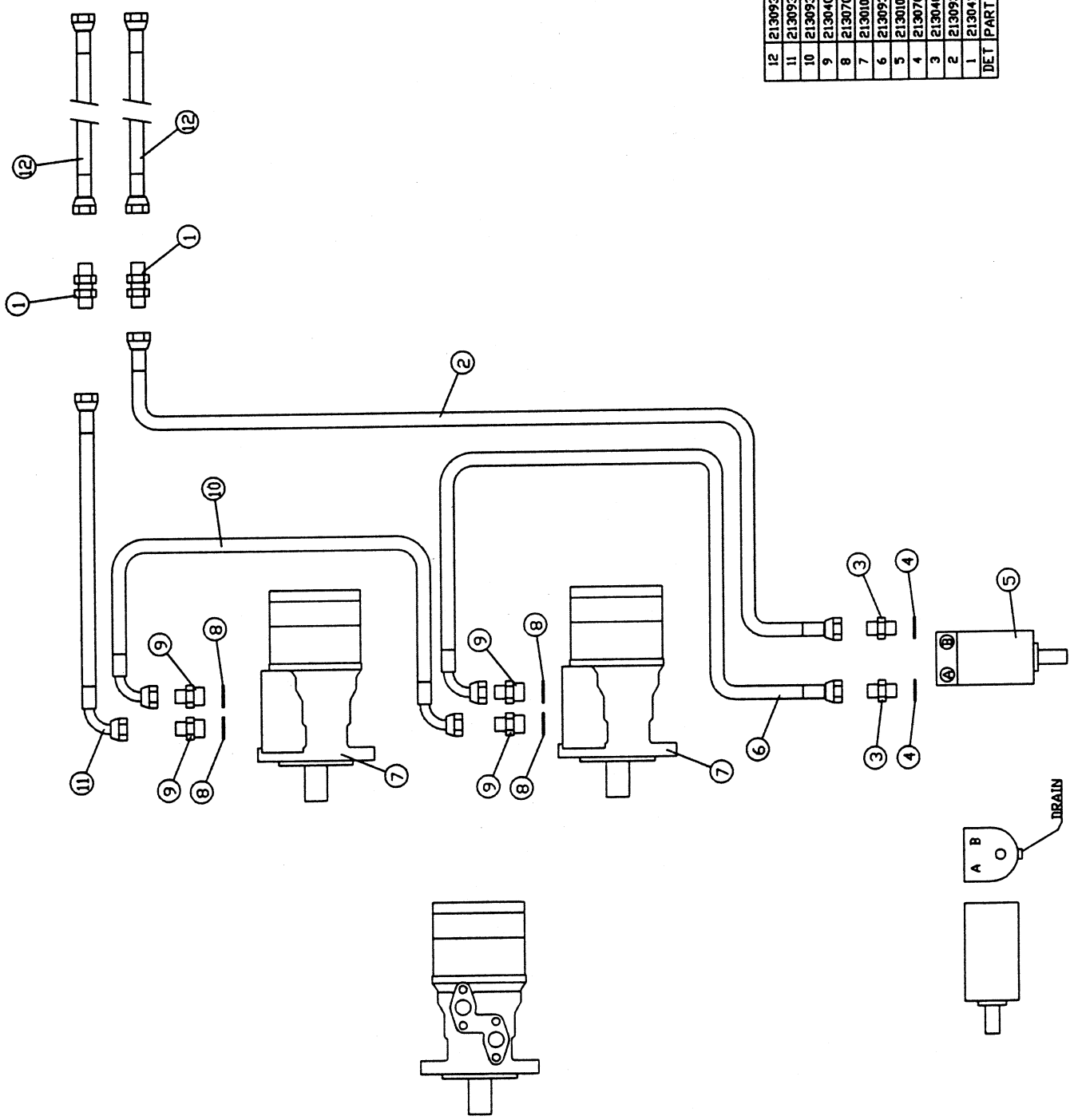
DET	PART No	DESCRIPTION	QTY
19	21304024	3/8" BSP F/F ADAPTOR	1
18	21304016	3/8" BSP M/M ADAPTOR	1
17	21309345	HOSE 3/8" BSP STF/SVEPT90F x 500	1
16	21304018	3/8" x 1/2" BSP M/M ADAPTOR	2
15	21307003	BONDED SEAL 1/2" BSP	2
14	21309344	HOSE 3/8" BSP STM/SVEPT90F x 800	1
13	21301023	HYD. MOTOR AVHR 400H	1
12	21301024	HYD. MOTOR AVHR20	1
11	21307006	BONDED SEAL 1/8" BSP	1
10	21307002	BONDED SEAL 3/8" BSP	2
9	21309346	HOSE 3/8" BSP STM/SVEPT90F x 240	2
8	21309056	HOSE 1/4" BSP STM x 1/8" BSP STM x 1500	1
7	21309352	HOSE 3/8" BSP STM/STM x 1200	1
6	21303121	1/4" BSP F/F NON RETURN VALVE	1
5	21307001	BONDED SEAL 1/4" BSP	2
4	21304003	3/8" x 1/4" BSP M/M ADAPTOR	1
3	21305038	TEE 3/8" BSP F/F/F	1
2	21304101	3/8" BSP BULKHEAD FITTING	2
1	21309348	HOSE 3/8" BSP STF/STF x 1500	2

HYDRAULIC ASSY 200



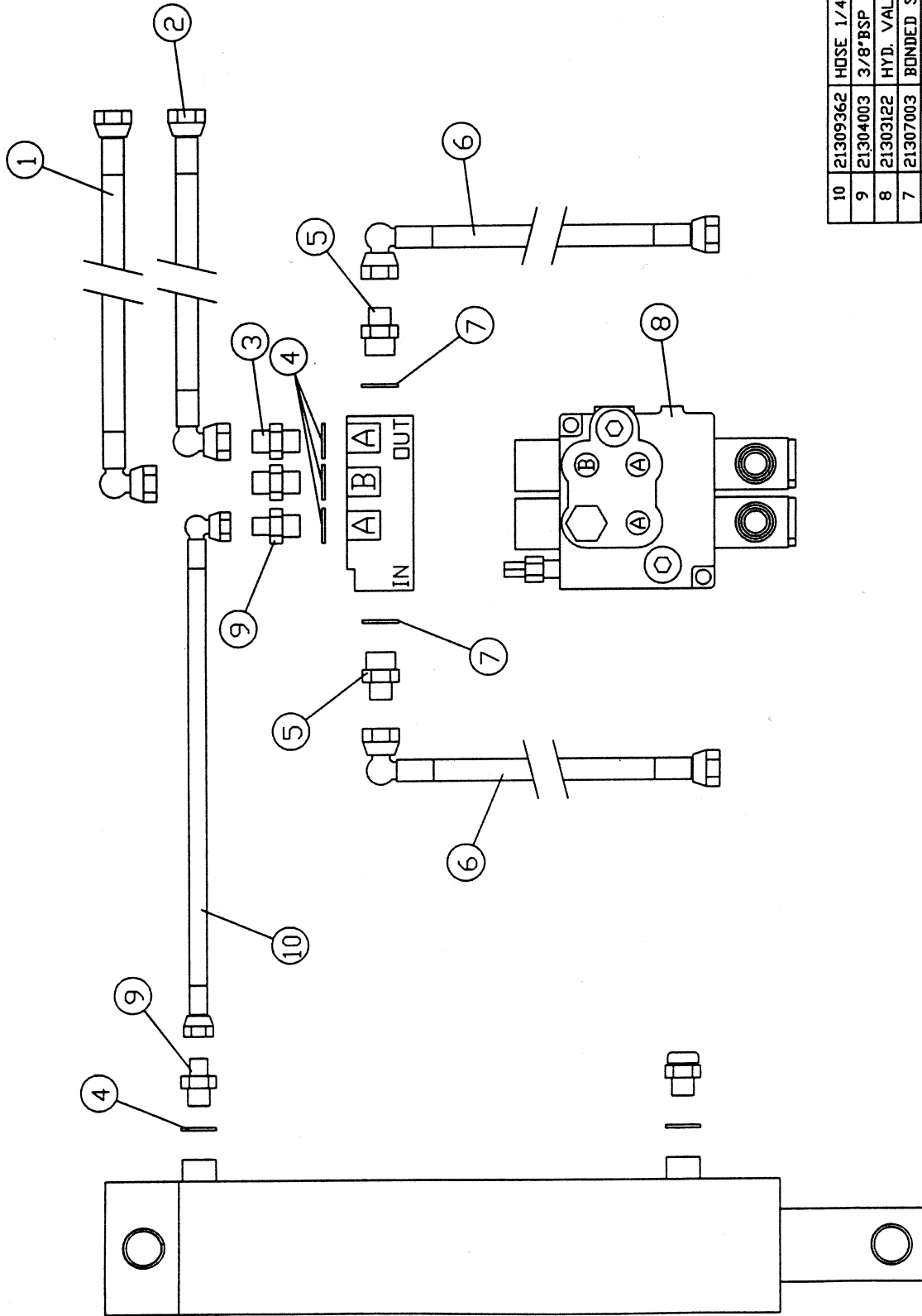
20	21304024	3/8" BSP F/F ADAPTOR	1
19	21304016	3/8" BSP M/M ADAPTOR	1
18	21309349	HOSE 3/8" BSP SWEPT90 F/F x 400	1
17	21309345	HOSE 3/8" BSP STF/SWEPT90F x 500	1
16	21304018	3/8" x 1/2" BSP M/M ADAPTOR	4
15	21307003	BONDED SEAL 1/2" BSP	4
14	21309344	HOSE 3/8" BSP STM/SWEPT90F x 800	1
13	21301023	HYD. MOTOR AV/MR 400M	1
12	21301024	HYD. MOTOR AM/MO	1
11	21307006	BONDED SEAL 1/8" BSP	1
10	21307002	BONDED SEAL 3/8" BSP	2
9	21309347	HOSE 3/8" BSP STM/SWEPT90F x 360	2
8	21309056	HOSE 1/4" BSP STM x 1/8" BSP STM x 1500	1
7	21309351	HOSE 3/8" BSP STM/SIM x 1400	1
6	21303121	1/4" BSP F/F NON RETURN VALVE	1
5	21307001	BONDED SEAL 1/4" BSP	2
4	21304003	3/8" x 1/4" BSP M/M ADAPTOR	1
3	21305038	TEE 3/8" BSP F/F/F	1
2	21304101	3/8" BSP BULKHEAD FITTING	2
1	21309348	HOSE 3/8" BSP STF/SIF x 1500	2
DET	PART No	DESCRIPTION	QTY

HYDRAULIC ASSY FS200



DET	PART No	DESCRIPTION	QTY
12	21309348	HOSE 3/8" BSP STIF/STIF x 1500	2
11	21309369	HOSE 3/8" BSP STIF/SWEPT90F x 420	1
10	21309370	HOSE 3/8" BSP SWEPT90 F/F x 450	1
9	21304018	3/8" x 1/2" BSP M/M ADAPTOR	4
8	21307003	BONDED SEAL 1/2" BSP	4
7	21301023	HYD. MOTOR AM/R 400M	2
6	21309371	HOSE 3/8" BSP STIF/SWEPT90F x 1950	1
5	21301025	HYD. MOTOR AMM 32 P-R SIDEPORTED	1
4	21307002	BONDED SEAL 3/8" BSP	2
3	21304016	3/8" BSP M/M ADAPTOR	2
2	21309372	HOSE 3/8" BSP STIF/STIF x 1950	1
1	21304101	3/8" BSP BULKHEAD FITTING	2

HYDRAULIC ASSY. TILT MECHANISM SPOOL VALVE KIT



DET	PART No	DESCRIPTION	QTY
10	21309362	HOSE 1/4"BSP STF/C90F x 450	1
9	21304003	3/8"BSP x 1/4"BSP M/M ADAPTOR	2
8	21303122	HYD. VALVE 2 SPOOL LEVER	1
7	21307003	BONDED SEAL 1/2"BSP	2
6	21309359	HOSE 3/8"BSP STF/C90F x 1000	2
5	21304018	3/8"BSP x 1/2"BSP M/M ADAPTOR	2
4	21307002	BONDED SEAL 3/8"BSP	4
3	21304016	3/8" BSP M/M ADAPTOR	2
2	21309361	HOSE 3/8"BSP STF/C90F x 1500	1
1	21309360	HOSE 3/8"BSP STF/C90F x 1400	1

AG Dispenser

GARNETT FARMS ENGINEERING LTD POLICY NOTE

GFE policy is one of continuous improvement. We reserve the right to change prices or specifications of equipment at any time without notice. Orders are accepted subject to our standard conditions of sale. All weights and measures shown in this brochure are approximate.

WARRANTY

As part of GFE after sales back up programme, we have a full comprehensive dealer support service. For details of our warranty, please see your own GFE authorised dealer